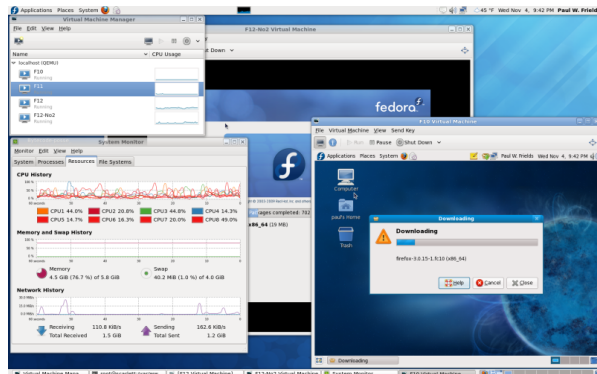




## FOR SYSTEM ADMINISTRATORS:

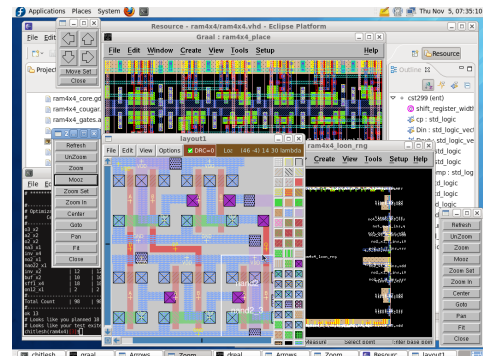
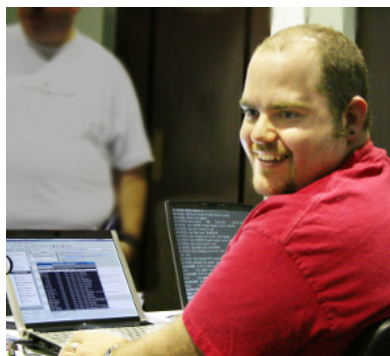
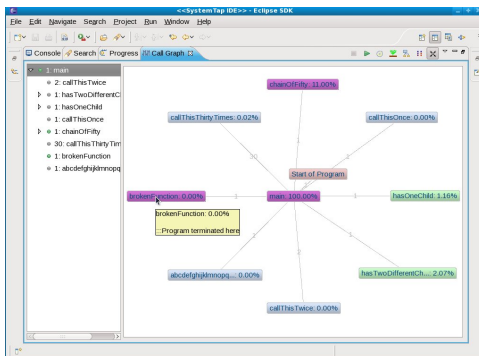


Fedora 12 gives you the future first. The technologies that make open source the platform of choice for savvy system administrators are all here. Fast, stable, secure, and ready for you to work your magic.

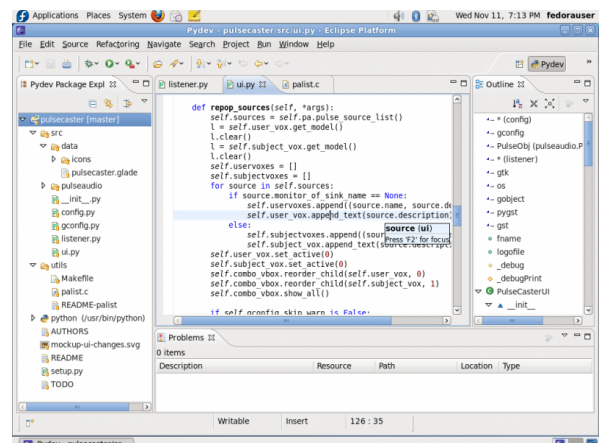
A number of improvements are included in Fedora 12 to make your life easier. A new initial ramdisk setup tool called Dracut helps keep boot time as low as possible. There's now ext4 support for GRUB, and Kernel Mode Setting (KMS) is enabled by default on systems with NVIDIA, ATI and Intel video cards for a faster and smoother graphical boot.

For those who use Samba, the addition of GFS2 Clustered Samba and improvements in HA (high availability) clustering makes sharing data across machines easier and more reliable. Fedora 12 also features constant security updates for bulletproof systems, and a number of virtualization improvements have emerged with this release that use memory more efficiently, provide more flexible hardware and network solutions, and boost the performance of virtual guest disk images. You can even create scripts to perform complex tasks directly on guest disk images. Fedora 12 helps you unite all the diverse cultures of your virtual guests into a single functional system.

## FOR DEVELOPERS:



For developers, Fedora 12 includes a rich set of development tools, including all popular programming languages, IDEs, and an extensive set of libraries. The most recent versions of emacs, mercurial, and php are included - no need to worry about downloading the latest and greatest, we've got them all. And for developers using Eclipse, version 3.5.1 (Galileo) is included in Fedora 12, along with more Eclipse plug-ins than ever before. And these features are all in addition to the world's most popular web, SQL and application servers, creating a complete development and production environment in one easy-to-use platform.



For more information, please visit:  
**WWW.FEDORAPROJECT.ORG**