

DIGITAL ART USING GIMP & INKSCAPE



PRESENTED BY

Máirín Duffy

Fedora Design Team Lead &
Sr. Interaction Designer, Red Hat, Inc.



Who am I?

QUICK STATS:

Operating System	Fedora 12 (<i>Fedora user since 2004</i>)
Desktop Environment	GNOME
Occupation	Interaction Designer at Red Hat Fedora Design Team Lead
Last used OS X, Windows, or any Adobe stuff	Early 2006

TODAY'S TOPICS:

- #1** Which program do I use?
- #2** Where can I get source materials?
- #3** Dive into Gimp!
- #4** Dive into Inkscape!
- #5** How to learn more!

#1

Which program do I use?

STAGE 1



VS



INKSCAPE

THE GIMP

Vector

~VS~

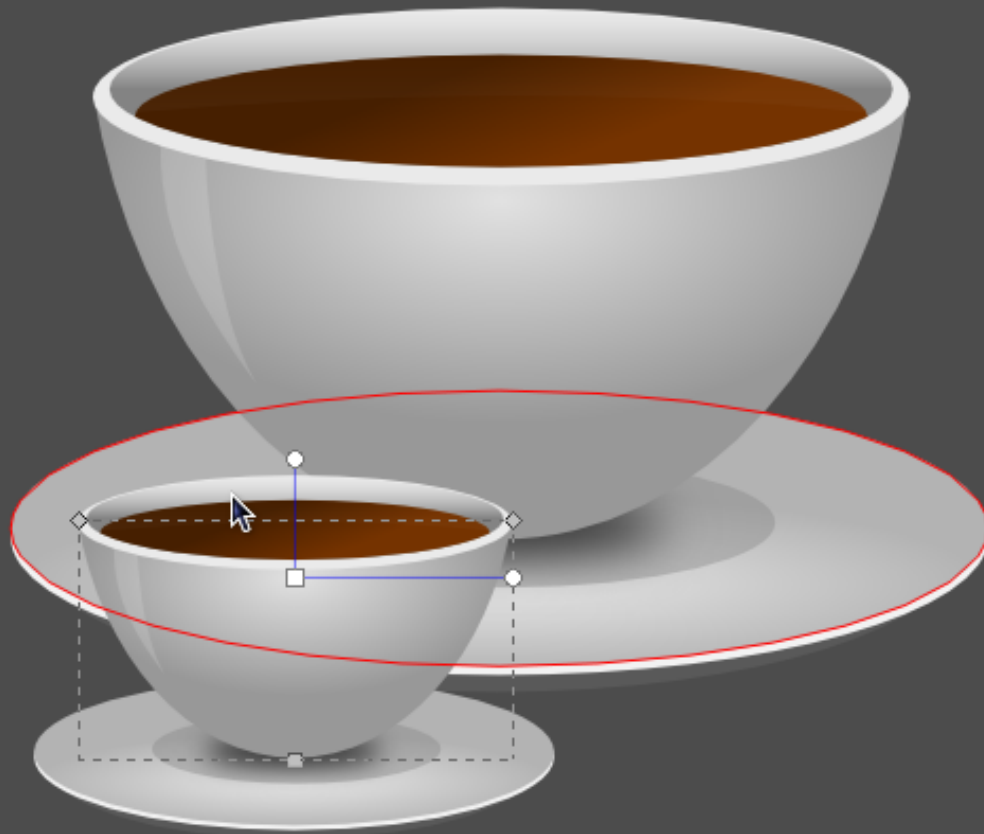
Bitmap

Bitmap



Photo credit: "Yellow" by Jenny Downing on Flickr. Used under a Creative Commons Attribution 2.0 license.

Vector



#2

Where can I get source materials?

You want a pony.

[My Little Pony Games](#)

[Ask.com](#) Search for My Little **Pony** Games Find My little pony games


[My Little Pony Games](#)

[www.Target.com](#) My Little **Pony** Games Online. Shop Target.com.

[Ponies at A](#)

[Amazon.com](#) orders over \$

 Related searches: [horses](#) [my little ponies](#) [cartoon ponies](#)


Here are some
550 x 377 - 24k - jpg
[contrib.andrew.cmu.edu](#)
[Find similar images](#)



All of our ponies
400 x 300 - 36k - jpg
[stonyvaleponies.com.au](#)
[Find similar images](#)



"The Propaganda
760 x 547 - 118k - jpg
[steadyhabits...](#)
[Find similar images](#)



o ponies in the
440 x 320 - 55k - jpg
[infothekenet](#)
[Find similar images](#)



Pygmy Ponies
345 x 339 - 22k - jpg
[onlyhorsespictures.co](#)
[Find similar images](#)



Dales ponies have
400 x 450 - 130k - jpg
[daleslogger.com](#)
[Find similar images](#)



Essjay NZ found these
500 x 500 - 230k - jpg
[blog.ponyaday.com](#)
[Find similar images](#)



American Kerry Bog
420 x 390 - 44k - jpg
[kerrybogpony.org](#)
[Find similar images](#)



Most of our
800 x 600 - 132k - jpg
[forestgestud.com](#)
[Find similar images](#)



lrideon I Love
402 x 555 - 17k - jpg
[tackroominc.com](#)
[Find similar images](#)

BRIEF FLOSS ARTISTS' PUBLIC SERVICE MESSAGE #1:

Pay attention to licenses.



YOU SHOULDN'T JUST USE RANDOM IMAGES OFF OF GOOGLE IMAGES.
WE ALL DO KNOW THAT, DON'T WE?

Pony credit: "White horse" by liftarn on Open Clip Art. Public Domain.

Gaspar Llamazares thanks you.



Gaspar Llamazares.

"Llamazares2" by Chesi Photos CC on Flickr.
Used under a Creative Commons Attribution ShareAlike 2.0.



**FBI Simulated Photo of Osama Bin Laden,
created using a photo of Mr. Llamazares from
Google Images.**

BRIEF FLOSS ARTISTS' PUBLIC SERVICE MESSAGE #2:

Give credit where it's due.



LOOK BELOW. THAT'S A FORM OF ATTRIBUTION. NOT SO HARD, RIGHT?

Pony credit: "With practice I can sleep standing up" by exfordy on Flickr. Used under a Creative Commons Attribution 2.0 license.

Where to find openly-licensed materials!

Open Clip Art
openclipart.org

Vector artwork; SVGs and PNGs. All Public Domain.

Wikimedia Commons
commons.wikimedia.org

Photos and illustrations. Usually Creative Commons, GNU, or Public Domain.

CC Search
search.creativecommons.org

Filters Google Images, Yahoo Images, and Flickr for CC-licensed content including imagery.

CompFight
compfight.com

Nice interface for searching Flickr for CC-licensed photography.

DeviantArt
deviantart.com

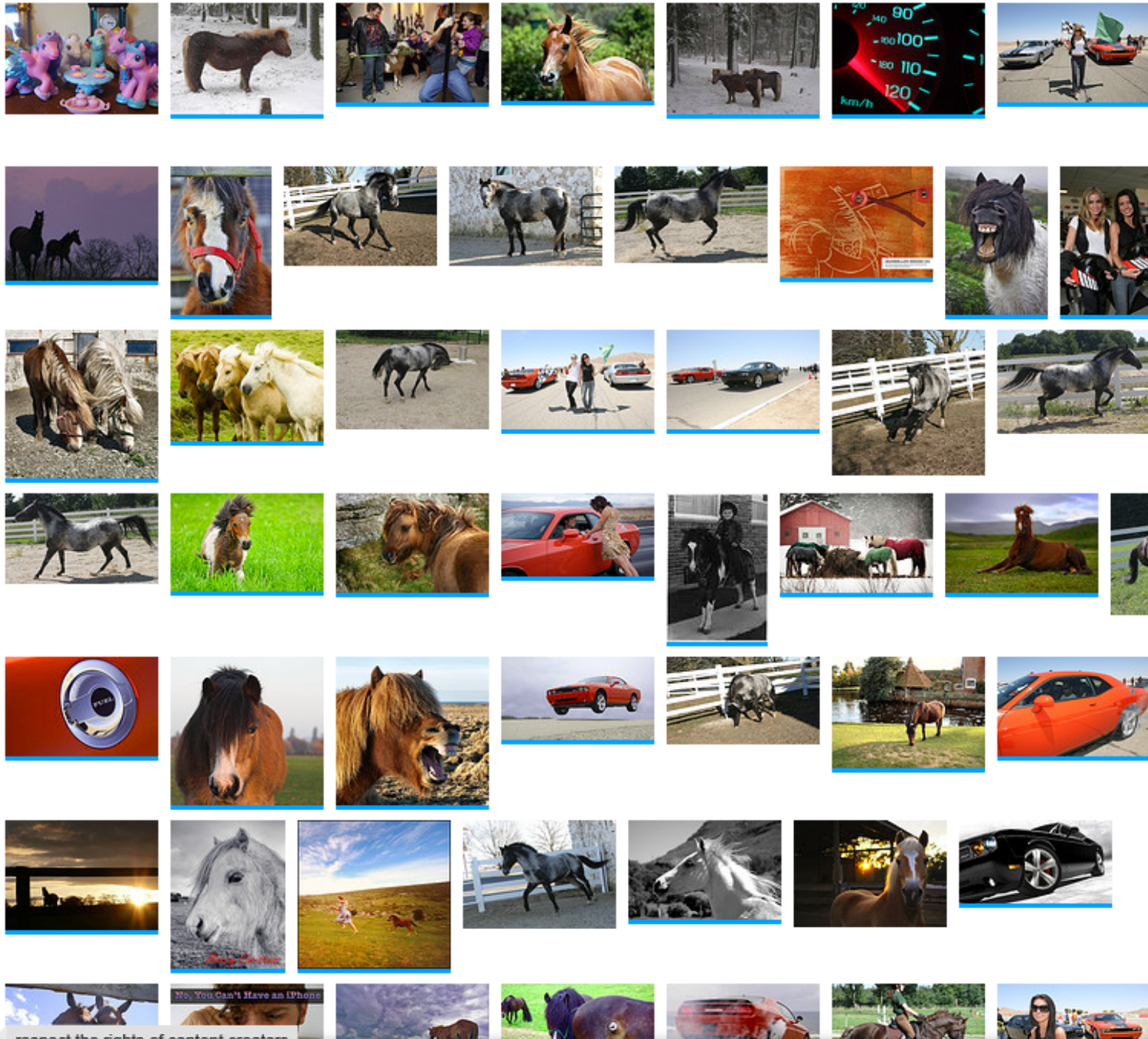
Has some CC-licensed imagery (hard to search for) but also has CC-licensed Gimp brushes (not hard to find)!

ColourLovers
colourlovers.com

Offers Gimp Palette Files (compatible with Inkscape too!) for all their color palettes.

Yourself
Yes, you!

Take your own photos or generate your own illustrations. :)



UPDATES

about 1 month ago
 Hey, we've spent the night tweaking the server. Let us know if you're still experiencing slow response to your searches:
hello@compfight.com

about 1 month ago
SLOW: Unfortunately, we are having server issues. Search times are going to be slow until we get it resolved. Sorry for the glitch folks.

SUPPORT



From Doseido, the creator of Headline and Sharecard, a new cool app is on the way.

[Powered by Fusion](#)



Search

[Clipart](#)

[News](#)

[Artists](#)

[Packages](#)

[Participate](#)

[About](#)

Search results for panda



panda
by Machovka



Panda Head
by rejon



giant_panda_1
by baronchon



giant_panda_2
by baronchon



Panda bear
by przemyslaw



Panda
by Linuxien



**panda point
d'interrogation**
by laurent



panda
by gurica



panda
by hrum

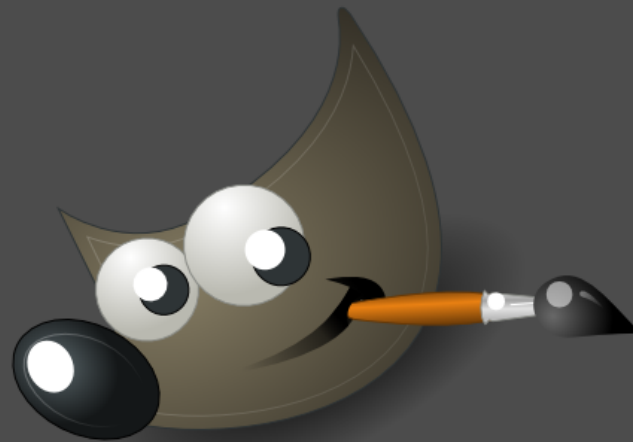


Cartoon Panda
by StudioFibonacci



#3

Dive into Gimp!



THE **GIMP**

GIMP TOPICS

#1 MASKS:

How to extract objects from photographs.

#2 LAYER BLENDING MODES:

Easy but impressive effects.

#3 MASKS + LAYER MODES:

Unbelievable photo effects.

MASKS

"Despite all my rage,
I am still just a pony
in a cage."



BEFORE

MASKS

"Despite all my rage,
I am still just a pony
in a cage."



Yippee! I'm a
free pony now!

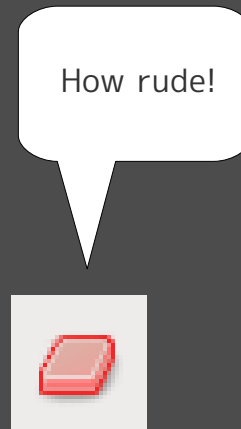


BEFORE

AFTER

BRIEF GIMP UI PUBLIC SERVICE MESSAGE #1:

Don't use the erase tool!



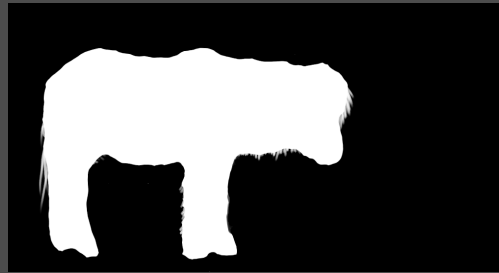
IF YOU MAKE A MISTAKE WITH THE ERASER, YOU RELY ON LIMITED UNDO HISTORY.
WITH MASKS, YOU CAN EASILY CORRECT MISTAKES WITHOUT UNDO.

MASKS

A simple equation.



Pony in a cage



Pony mask



Freed pony!

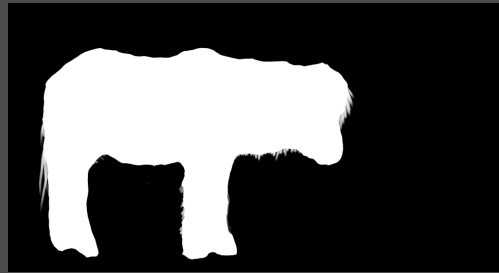
Thanks for
freeing me!

MASKS

A simple equation.



Pony in a cage



Pony mask

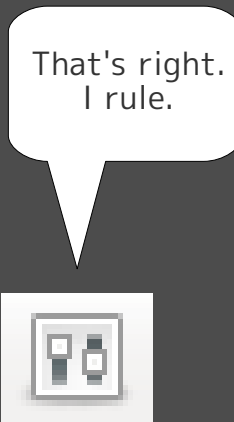


Freed pony!

Let's try it!

BRIEF GIMP UI PUBLIC SERVICE MESSAGE #2:

Tool options is your friend!



SOMETHING WORKING UNEXPECTEDLY? CHECK TOOL OPTIONS.
TOOL OPTIONS ALWAYS REFLECTS THE CURRENTLY SELECTED TOOL.
THERE'S LOTS OF GOODIES IN THERE, TOO!

LAYER BLENDING MODES

Blend the same image on top of itself...



Blur + Overlay



Burn



Dodge

It's a tad bit
bright here
isn't it?



Hard Light + Subtract + Grain Extract

LAYER BLENDING MODES

Blend a color or texture on top...

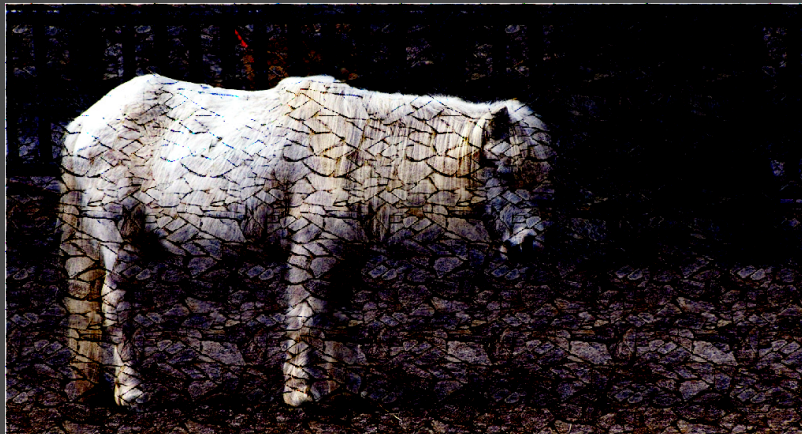


Yes, you CAN
have a pink pony!

Pink Pony (Color Blend)



Wooden Pony (Lighten Only + Burn)



Rock Pony (Burn)



Bubble Pony (Grain extract)

LAYER BLENDING MODES

Blend different photos...



Burn Blend



Dodge Blend



Wow, I can see right through you!

I'm a ghost!!

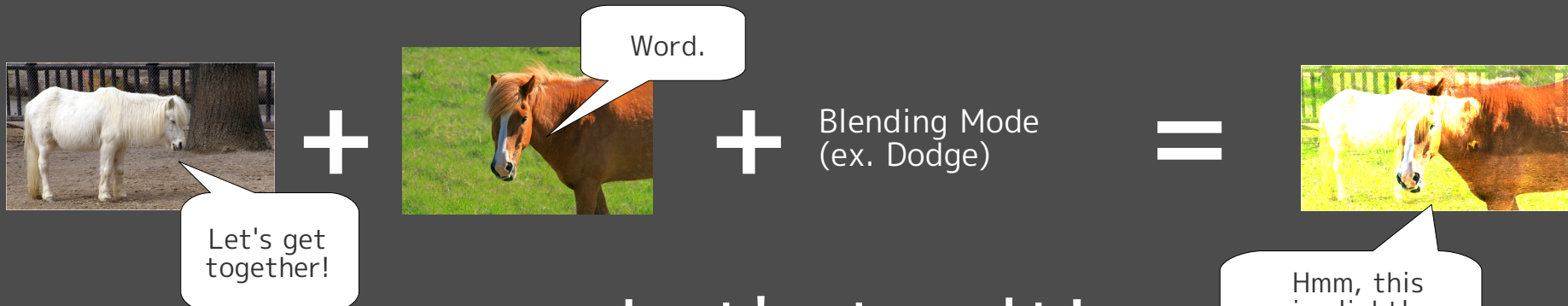
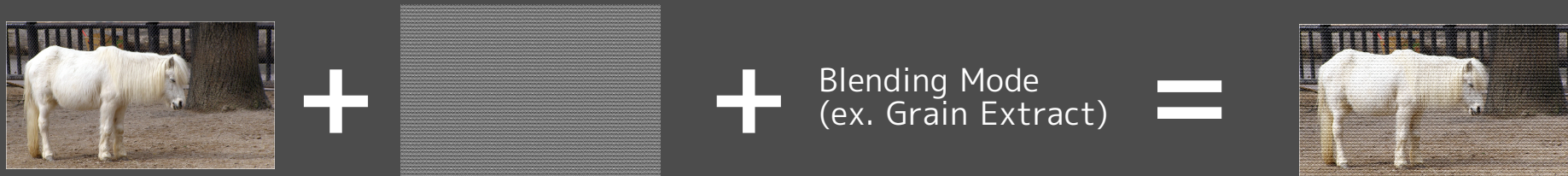
Overlay Blend



Difference Blend

LAYER BLENDING MODES

The basics:



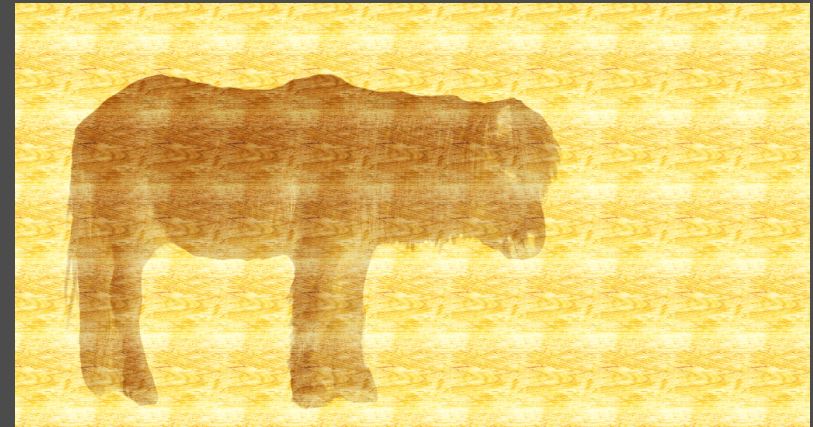
Let's try it!

MASKS + LAYER BLENDING MODES

Combine both techniques!



Hair mask of pink color blend layer



Pony brand (Pony mask on wood pattern)



Painterly brush mask, overlay blend



Pink pony layer with masked friend pony

MASKS + LAYER BLENDING MODES

Combine both techniques!



Hair mask of pink color blend layer



Pony brand (Pony mask on wood pattern)



Painterly brush mask, overlay blend



Pink pony layer with masked friend pony

Let's try it!

#4

Dive into Inkscape!



INKSCAPE TOPICS

- #1 BITMAP IMPORT & TEXT TOOL:**
Make a simple LOLCAT.
- #2 TEXT TOOL:**
Create a simple logotype.
- #3 SHAPES, PATHS, & NODES:**
Create a simple logomark.
- #4 BLUR & PATH FUNCTIONS:**
Bling-ify your logo!

BRIEF INKSCAPE UI PUBLIC SERVICE MESSAGE #1:

Don't forget this lock.

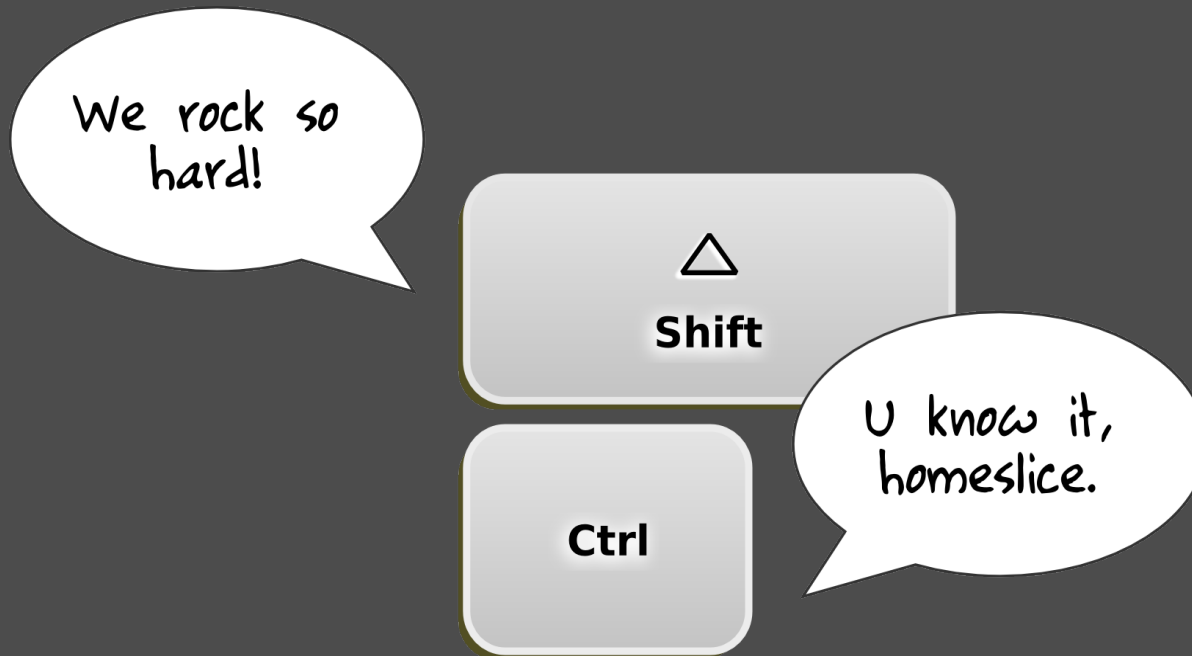
Don't forget
about me!



IF YOUR DRAWINGS AND TEXT ARE GETTING STRETCHED, TRY CLICKING IT!

BRIEF INKSCAPE UI PUBLIC SERVICE MESSAGE #2:

Ctrl & Shift are magic!



WHEN IN DOUBT, TRY THEM OUT!

SCALING, ANGLES, ROTATION, MOVING, UNDO, STROKE v. FILL ...

BRIEF INKSCAPE UI PUBLIC SERVICE MESSAGE #3:

Don't get lost!



STUCK IN LALA LAND? HITTING '5' WILL BRING YOU BACK TO CENTER.

BRIEF INKSCAPE UI PUBLIC SERVICE MESSAGE #4:

Use Ctrl+D.



SELECT OBJECT &
HIT CTRL+D



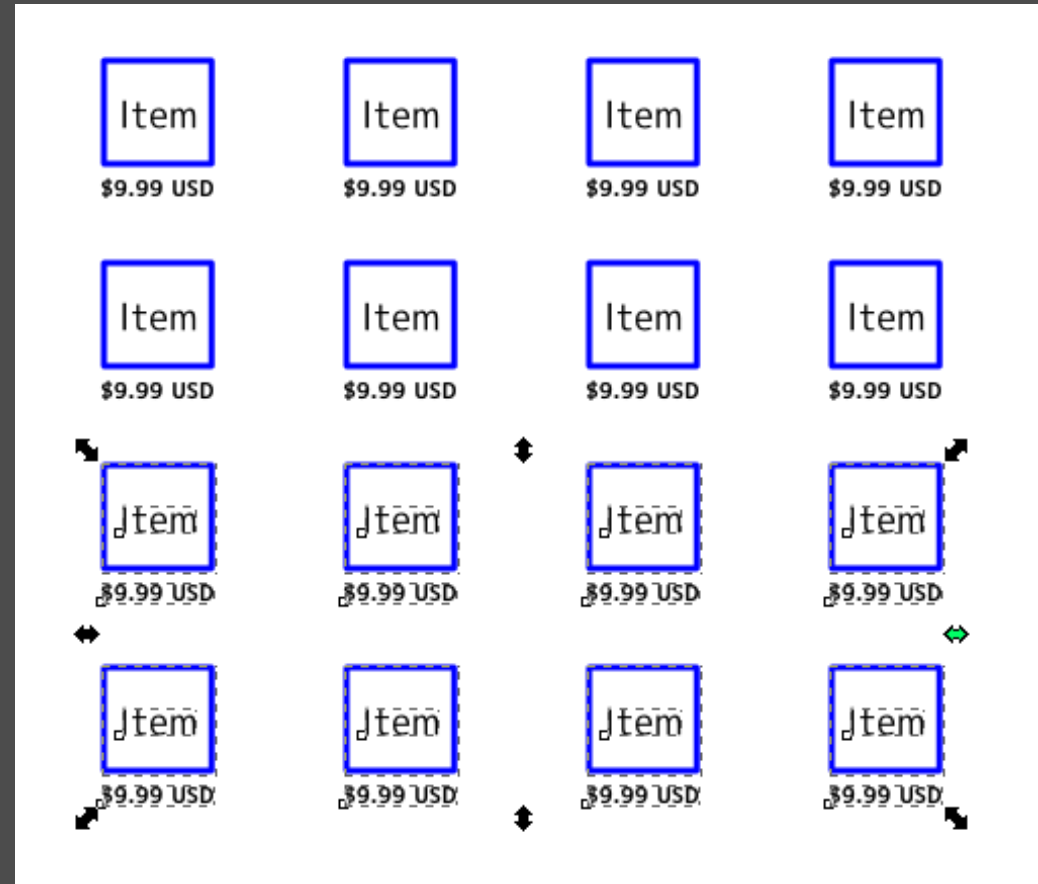
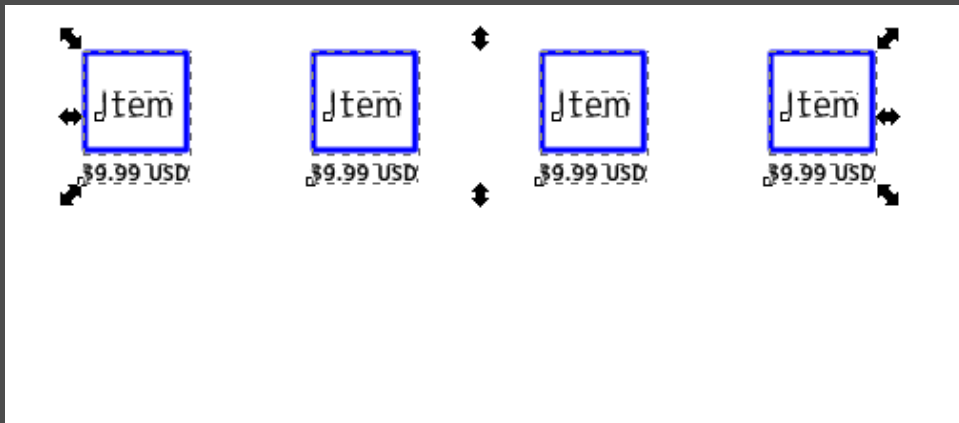
HOLD DOWN SHIFT
AND KEEP PRESSING
ARROW DOWN



A PERFECT COPY.
MODIFY AS NEEDED.

IT WILL SAVE YOU SO MUCH TIME.

Ctrl+D really saves you time.



16 OBJECTS FROM 4, ALIGNED AND SPACED PERFECTLY.

BITMAP IMPORT & TEXT TOOL

LOLCATs made easy.



Tux-hatin' kitty.



LOLCAT Tux-hatin' kitty!

Let's try it!

TEXT TOOL

Line height.

**Tux's
LOLCATS**

100% line height.

**Tux's
LOLCATS**

70% line height

**Tux's
LOLCATS**

200% line height

TEXT TOOL

Letter spacing.

**Tux's
LOLCATS**

Normal letter spacing

**Tux's
LOLCATS**

Tight letter spacing

**T u x ' s
L O L C A T S**

Loose letter spacing

TEXT TOOL

Kerning.



Tux's
LOLCATS

Just one letter!



Tux's
LOLCATS

Up and down!



Tux's
LOLCATS

Rotate, too.

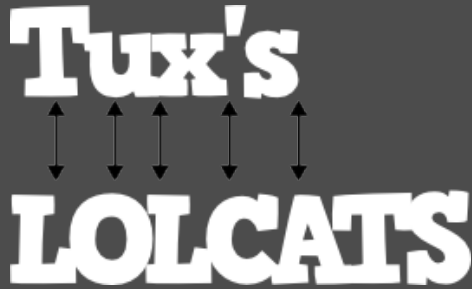
TEXT TOOL

Text on a path.

**Tux's
LOLCATS**

TEXT TOOL

The basics.



The text "Tux's LOLCATS" is shown in a bold, white, sans-serif font. Five vertical double-headed arrows are positioned between the two lines of text, indicating the vertical distance between the lines.

Line spacing.



The text "LOLCATS" is shown in a bold, white, sans-serif font. Six horizontal double-headed arrows are positioned between the letters, indicating the horizontal distance between each letter.

Letter spacing.



The text "Tux's LOLCATS" is shown in a bold, white, sans-serif font, slanted to the right. Several horizontal and vertical double-headed arrows are positioned between the letters and between the two lines of text, indicating the adjustments made to the spacing between individual characters.

Kerning.

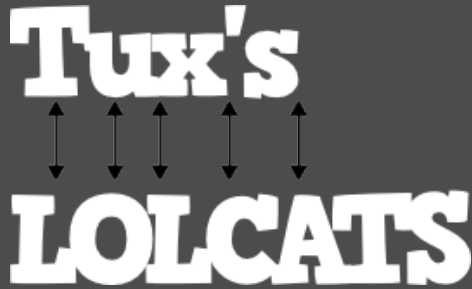


The text "LOL CATS" is shown in a bold, white, sans-serif font, following the curve of a grey five-pointed star. The letters are arranged to follow the path of the star's outline.

Text on a path.

TEXT TOOL

The basics.



Tux's
LOLCATS

Line spacing.



L O L C A T S

Letter spacing.



Tux's
LOLCATS

Kerning.

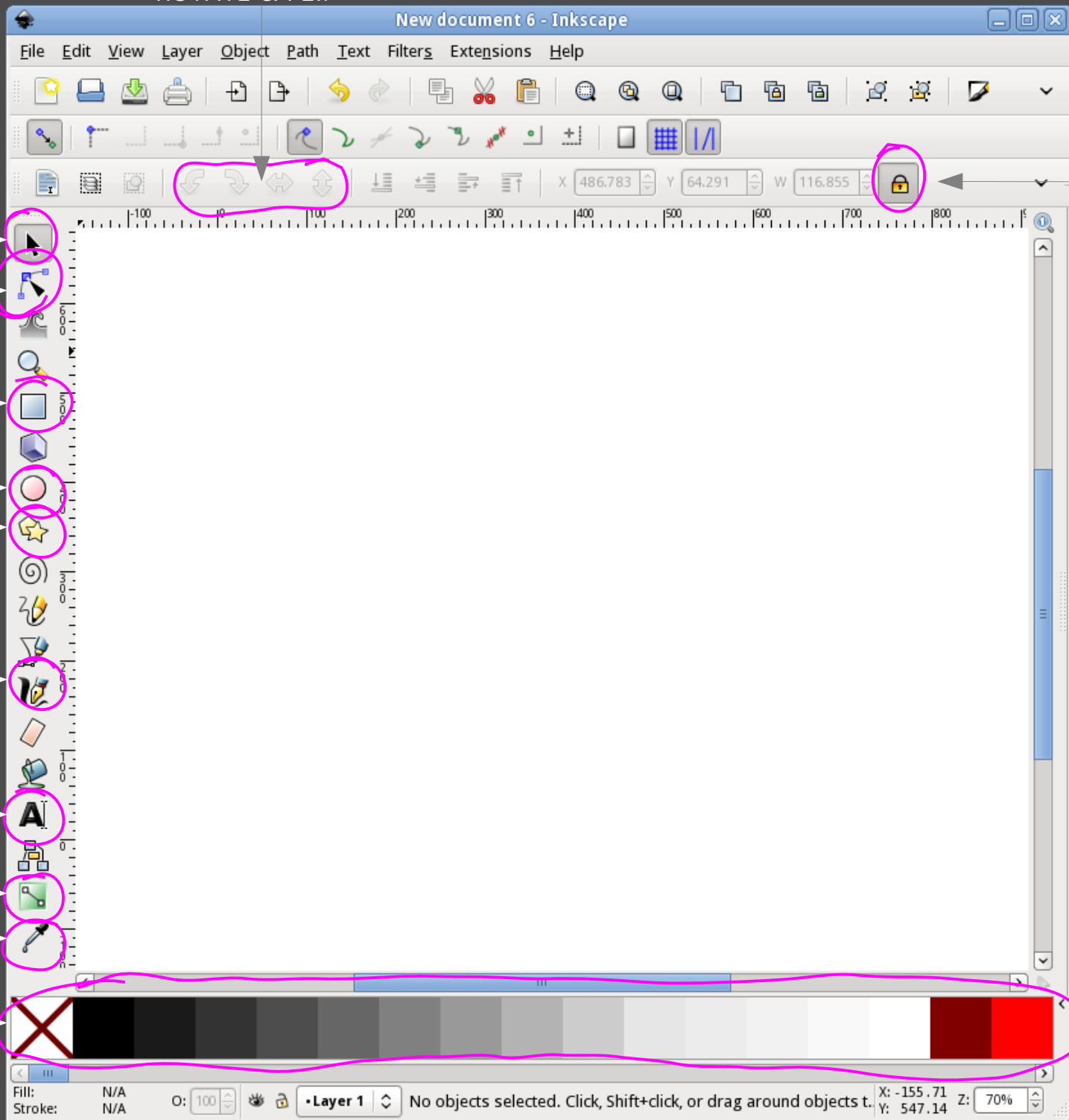


LOLCATS

Text on a path.

Let's try it!

ROTATE & FLIP



ASPECT RATIO LOCK

SELECTOR

NODE EDIT

RECTANGLE

ELLIPSE

POLYGON

CALLI-
GRAPHY

TEXT

GRADIENT

DROPPER

PALETTE

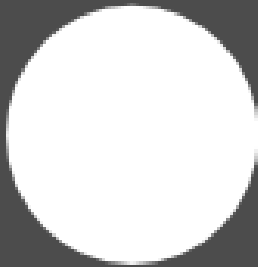
Fill: N/A Stroke: N/A O: 100 Layer 1 No objects selected. Click, Shift+click, or drag around objects t. X: -155.71 Y: 547.14 Z: 70%

SHAPES, PATHS, & NODES

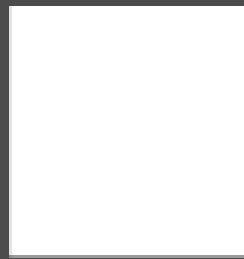
Inkscape makes shapes easy.



Calligraphy



Circle



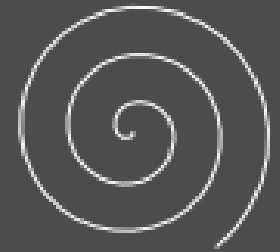
Rectangle



Polygon: Star



Polygon:
Pentagon



Spiral

SHAPES, PATHS, & NODES

They're also customizable.



Cut Circle



Rounded
Rectangle



Polygon: Star



Randomized
Polygon



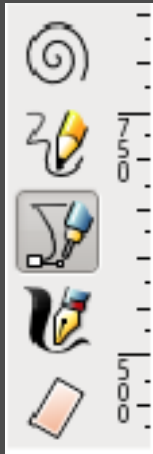
Modified Spiral



Each shape tool has a specialized toolbar with lots of hidden goodies!

SHAPES, PATHS, & NODES

Tools for working with paths & nodes.



Pen tool.
Used to create paths.



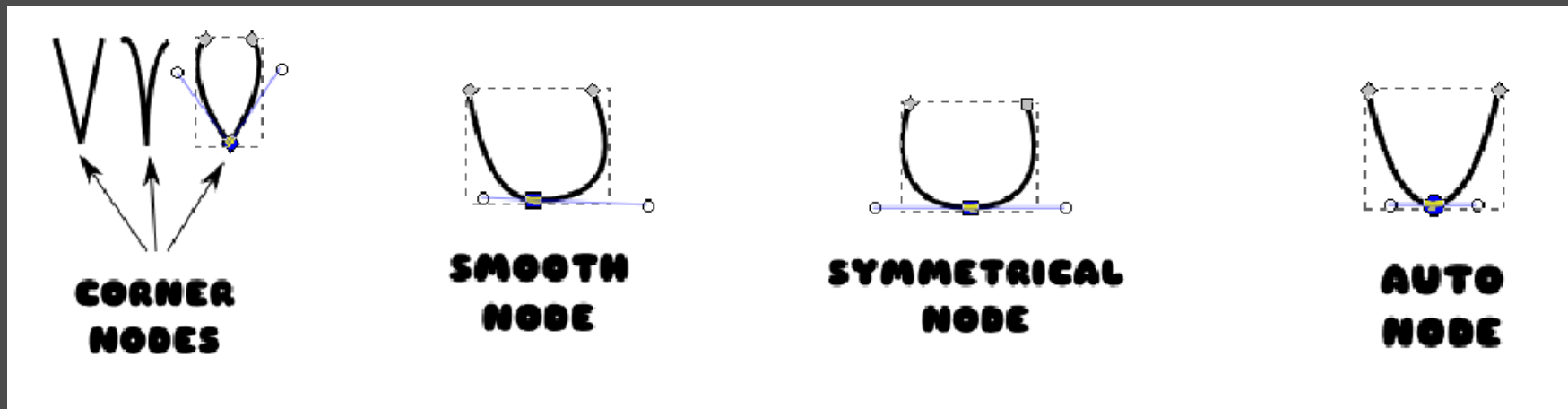
Node tool.
Used to modify nodes.



Node tool toolbar.
Rich node-editing controls.

SHAPES, PATHS, & NODES

Types of nodes.



You can convert between the types using the node toolbar:



SHAPES, PATHS, & NODES

Let's give it a try.



PATH FUNCTIONS

What can you do with two circles?



UNION



INTERSECTION



EXCLUSION



DIFFERENCE
(Front path cuts the
bottom path)



DIVISION
(Front path cuts the
bottom path)

BLUR & PATH FUNCTIONS

Convert the letters to paths, then use intersection to create gloss.



BLUR & PATH FUNCTIONS

Add a touch of blur!



BLUR & PATH FUNCTIONS

Add a touch of blur!



Let's try it!

#5

How to learn more!

LEARNING MORE!

#1 My Inkscape class :)

<http://mairin.wordpress.com/category/inkscape-class/>

#2 FLOSS Manuals

<http://flossmanuals.net>

#3 Screencasters.HeathenX.org

<http://screencasters.heathenx.org/>

#4 Meet The Gimp! Video Tutorials

<http://meetthegimp.org/>

#5 Gimpology

<http://gimpology.org/>

#6 Inkscape Tutorials Blog

<http://inkscapetutorials.wordpress.com/>

Questions?

This presentation is under a Creative Commons Attribution ShareAlike 3.0 License.
Please enjoy and share.



This presentation was created through the exclusive use of free software and content:
Fedora 12 • OpenOffice.org Impress • Inkscape • GIMP
Creative Commons licensed artwork • Openly-licensed fonts