

YOUR FIRST ALBUM COVER!

GOALS FOR THE DAY:

- Learn how to format document areas in Inkscape
- Learn how to import Gimp artwork into Inkscape
- Become comfortable working with Inkscape layers
- Learn how to Export artwork from Inkscape

QUESTION OF THE DAY:

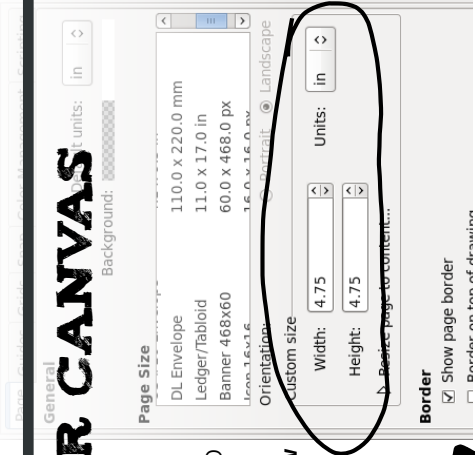
If you could do an album with any musician today, who would it be? What would your album title be, and what type of music would you create?

SETTING UP YOUR CANVAS

We're going to create a CD album cover for your musical collaboration! First we need to set up a canvas in Inkscape so when your album cover is printed, it will fit inside a CD case. CD album covers are 4.75" x 4.75".

Open up Inkscape, and select the **File > New > Default** menu item. Then go to **File > Document Properties**. Select "In" for inches under **Units**, and put "4.75" for both the **Width** and **Height** in the window. Then exit the window with the 'X' in the upper-right corner.

(This screenshot shows where you have to fill in these values!)



You should now have a CD album cover sized square in your Inkscape window!

IMPORTING IMAGES

You may want to find photographs or use some of your previous class work on your album cover design. You may also want to create a new image, work on it in the Gimp, and then bring it into Inkscape. Do you remember where to find photos?

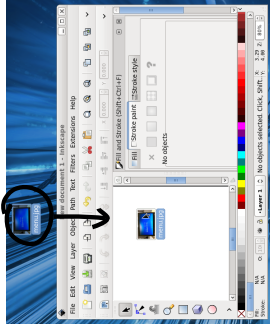
<http://creativecommons.org/search>

You can import images that are in **SVG, PNG, JPG, or GIF** format into Inkscape. You can tell which an image is by its name. What type of image is the example below?

nicki-minaj.jpg

— This is a **JPG** - it ends with **.jpg**.

HOW TO IMPORT IMAGES



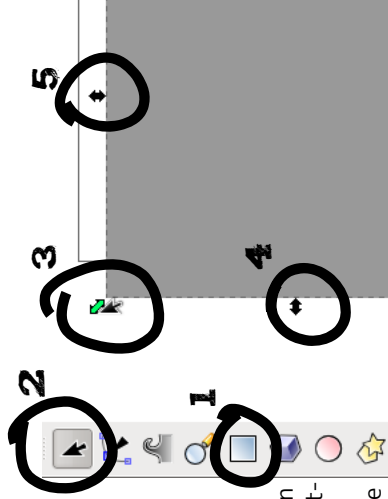
Click on the image (on your desktop or another folder), hold down the mouse button, and drag it into the Inkscape document, letting go when you're in Inkscape. Then select **Extensions > Images > Embed Images** in Inkscape, and press the **Apply** button. This will save the image inside of your Inkscape file.

WORKING WITH LAYERS

Inkscape has a layers system that will make it easier for you to work with all of the designs and text and photos you'll have. Here's how to use layers for your CD!

1. CD BACKGROUND

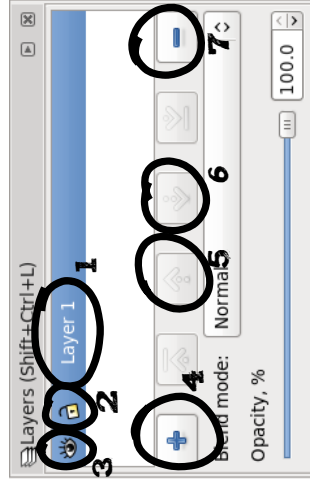
We'll make the background of your CD cover first. Click the **rectangle tool** (1) in the picture to the right), then click and drag a rectangle on to the canvas. You can drag it to be the size of your CD cover.



To adjust the size of the square, click on the **main arrow** (2) and click on the rectangle. Arrows will appear all over the square. Click a **diagonal one** (3) to resize height and width, or a **horizontal one** (4) to just resize width, or a **vertical one** (5) to resize height.

You can color or fill in the background for your album cover using any of the techniques we learned last class. (**Object > Fill and Stroke**.)

2. INTRO TO LAYERS



Click on the **eye** (3). Your background disappeared! Don't worry, it's still there. Click on the **eye** again to unhide it. You can **add a new layer** (4) with the + button and **delete a layer** (5) with the - button. You can move layers up and down by selecting them and clicking on **layer up** (6) or **layer down** (7).

3. ADDING MORE TO YOUR CD COVER



Once you are happy with the background for your CD cover, click on the **lock button** (2) to lock the **Background** layer. Then click the **add a new layer button** (4). When you add the layer, give it the name 'Album Artwork'.

Now you can import the logo you made during last class, or the Gimp artwork you made early on in class, or even new Gimp creations or photos from the internet onto your album cover.

SAVING YOUR CD COVER ART

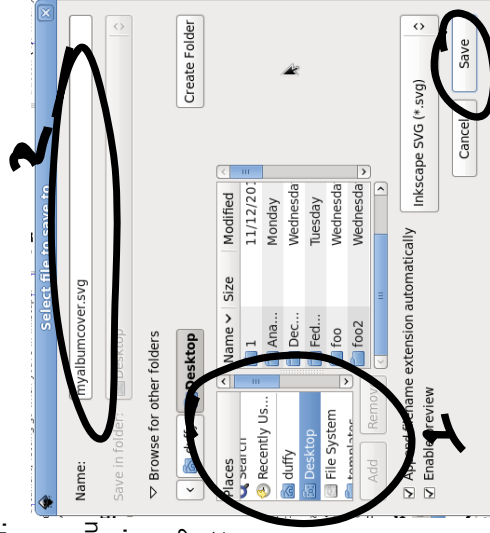
Once your CD cover is ready to go, you want to export it as a **PNG** file so you can **share** it on the internet or **print** it out easily. Inkscape files are normally **SVG** files, and these are more difficult to print and share. You still want to save your artwork as an **SVG** in case you want to edit it or add to it later.

1. SAVING YOUR SVG

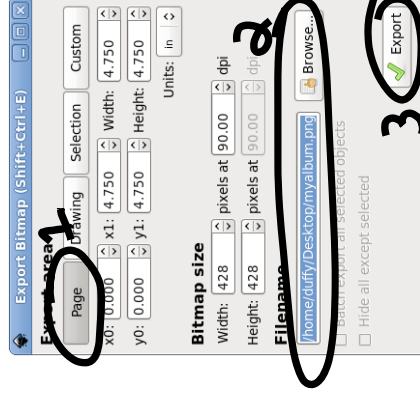
Where are you going to save your file? You can pick a location in the **places area** (1). I recommend that you pick **My Files**.

What are you going to **name** (2) your file? You can use whatever name you want, but make sure it ends with **.svg**.

Finally, save your file by clicking the **Save button** (3) in the lower-right.



2. EXPORTING TO PNG



Now save your work out as a **PNG** file. By the way, you can open up a **PNG** in **Gimp**!

Select **File > Export Bitmap** in the Inkscape menus. Under **export area**, click **Page** (1). Under **Filename**, click on the **Browse button** (2) to select a location and a name.

Finally, press **Export** (3) to save the file!